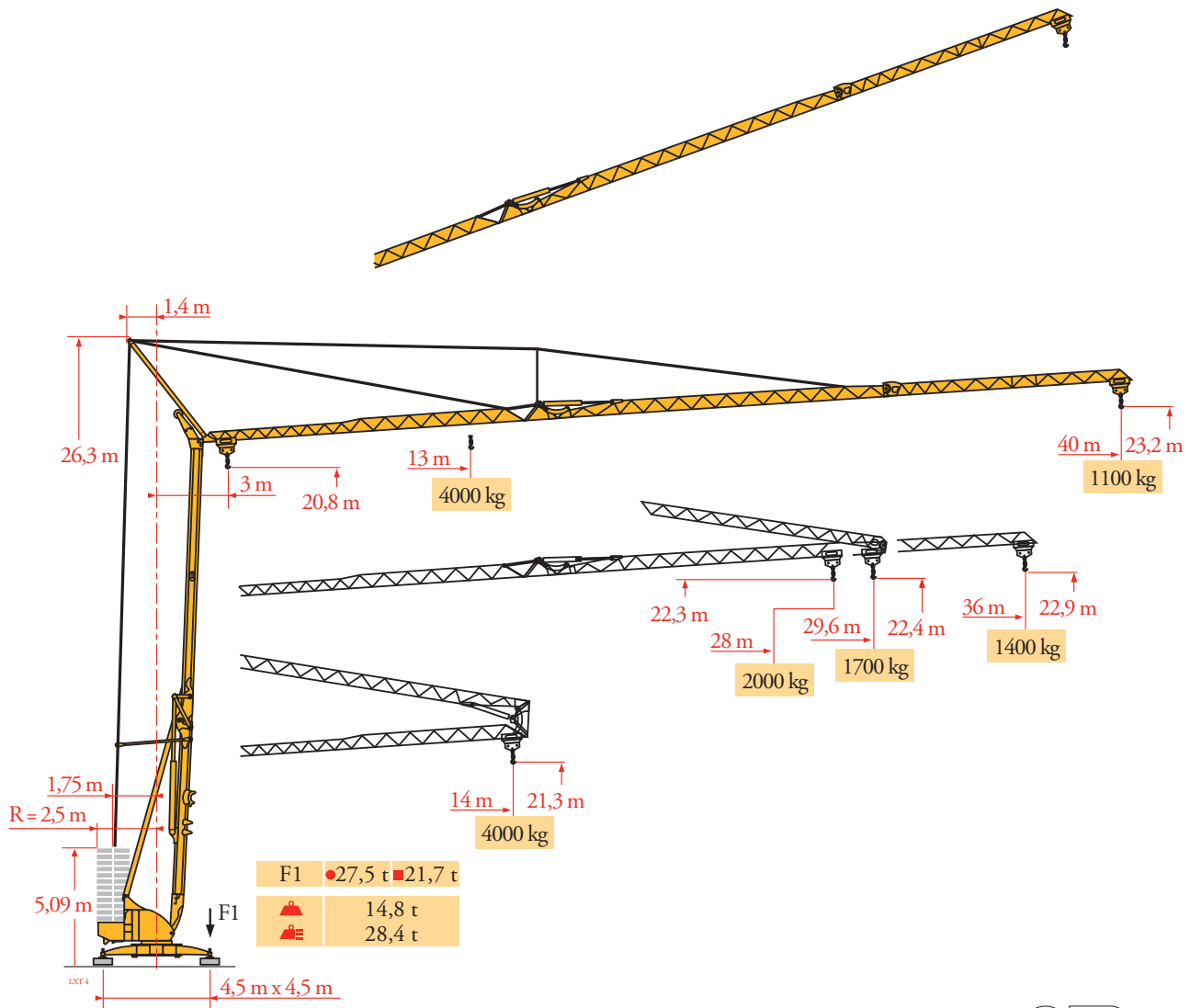
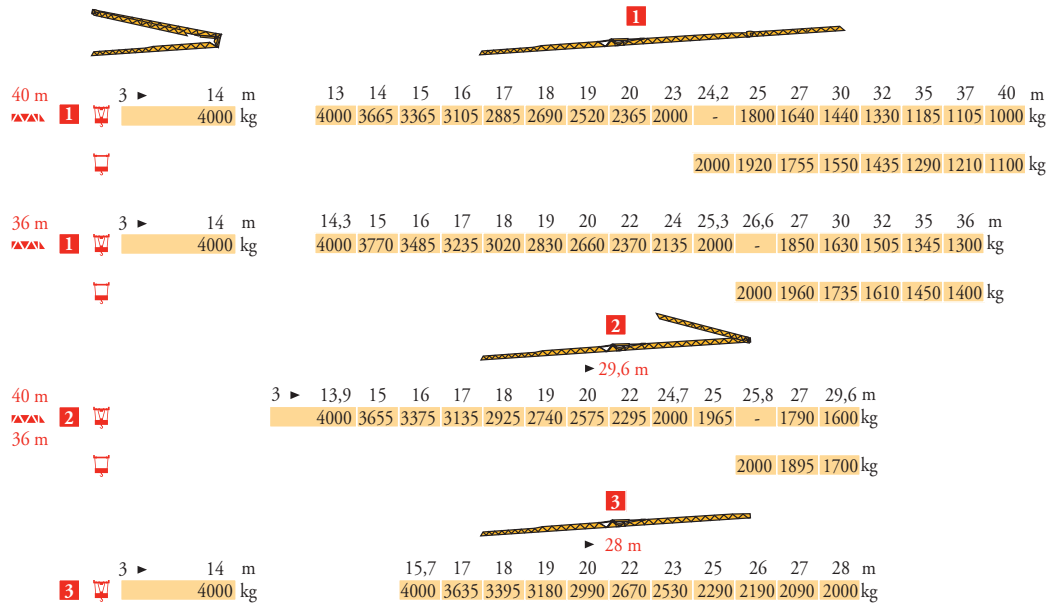


Potain Igo 50



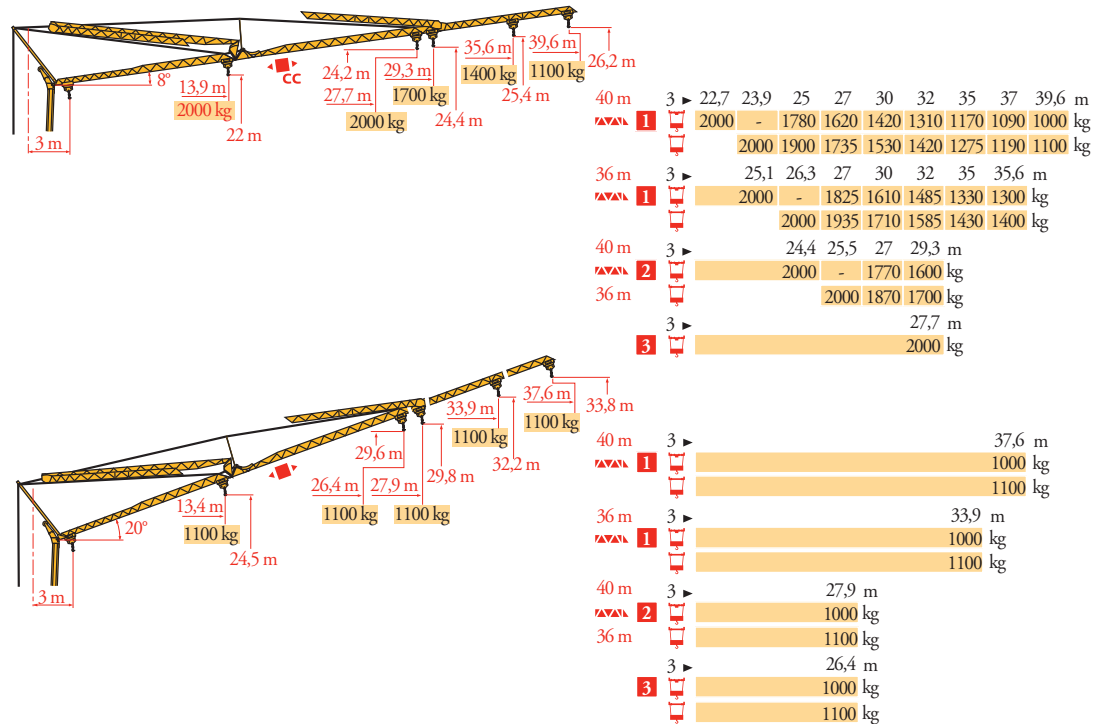
Courbes de charges
Lastkurven
Load diagrams
Curvas de cargas
Curve di carico
Curva de cargas
Диаграммы грузоподъемностей

LXT 4



Flèche relevée
Ausleger in Steilstellung
Luffing jib
Flecha izada
Braccio impennato
Lança inclinada
Маховая стрела

LXT 5



FR

Chariot distributeur
Chariot distributeur et courbes de charges
Réactions en service
Réactions hors service



Avide sans lest (ni train de transport) avec flèche et hauteur maximum



Poids total du lest

DE

Verfahrbare Laufkatze
Verfahrbare Laufkatze und Lastkurven
Reaktionskräfte in Betrieb
Reaktionskräfte außer Betrieb

Ohne Last, Ballast (und Transportachse), mit Maximalausleger und Maximalhöhe

Ballast-Gesamtgewicht.

EN

Traversing trolley
Traversing trolley and load diagrams
Reactions in service
Reactions out of service

Without load, ballast (or transport axes), with maximum jib and maximum height

Gross ballast weight.

ES

Carro distribuidor
Carro distribuidor y curvas de cargas
Reacciones en servicio
Reacciones fuera de servicio

Sin carga, sin lastre, (ni tren de transporte), flecha y altura máxima

Peso total del lastre.

IT

Carrellino distributore
Carrellino distributore e curve di carico
Reazioni in servizio
Reazioni fuori servizio

A vuoto, senza zavorra (ne assali di trasporto) con braccio massimo e altezza massima

Peso totale della zavorra.

PT

Carro distribuidor
Carro distribuidor e curva de cargas
Reacções em serviço
Reacções fora de serviço

Sem carga (nem trem de transporte)- sem lastro com lança e altura máximas

Peso total do lastro.

RU








Грузовая тележка
Грузовая тележка и диаграммы грузоподъемностей
Реакции при работе
Реакции в покое

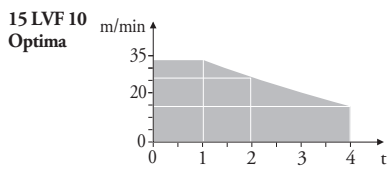
Вес без груза, балласта (или транспортных осей), с максимальной длиной стрелы и максимальной высотой

общий вес груза

Mécanismes
Antriebe
Mechanisms
Meccanismi
Mecanismos
Механизмы

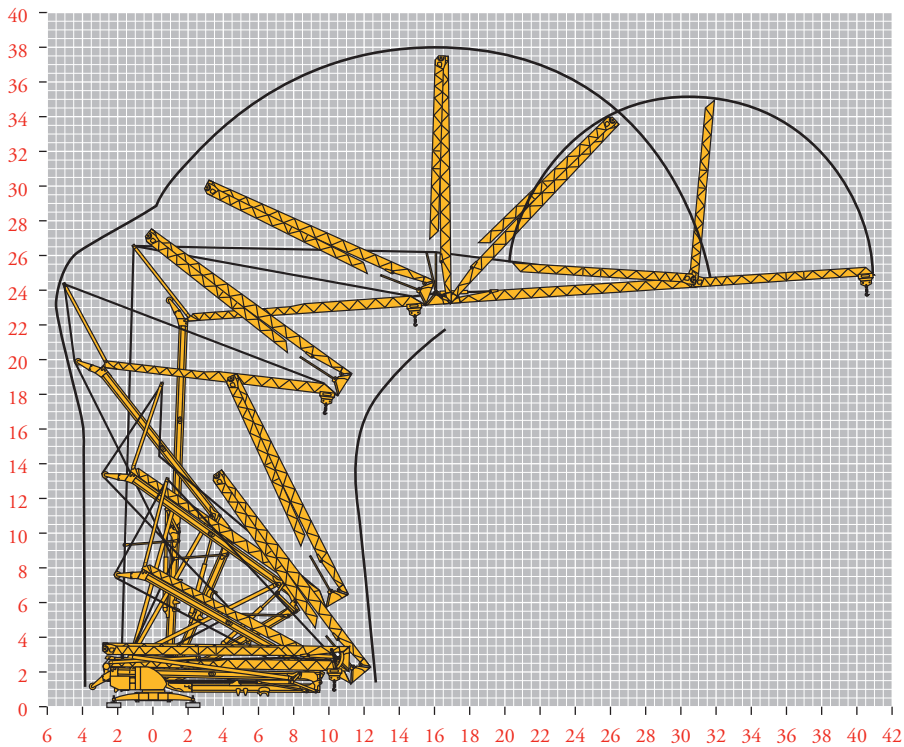
LXT5




													ch - PS hp	kW			
	15 LVF 10 Optima	m/min	3,6	18	30	49	66						15	11			
		kg	2000	2000	2000	1100	500										
		m/min	3,6	18	30	54	66	1,8	8,9	15	27	33					
		kg	2000	2000	2000	1000	500	4000	4000	4000	2000	1000					
	3 DVF5	m/min	19 - 45 (0 → 1000 kg) - 19 - 41 (1000 → 4000 kg)										3	2,2			
	RVF+ 51	t/min U/min rpm	0 → 0,8										5,5	4			
																	
400 V(+10% -10%) 50 Hz 480 V(+ 6% -10%) 60 Hz						15 LVF 10 : 23 kVA											



Montage
Montage
Erection
Montaje
Montaggio
Montagem
Монтаж

LXT3




FR
 Levage

 Distribution

 Orientation

DE
 Heben
 Katzfahren
 Schwenken

EN
 Hoisting
 Trolleying
 Slewing

ES
 Elevación
 Distribución
 Orientación

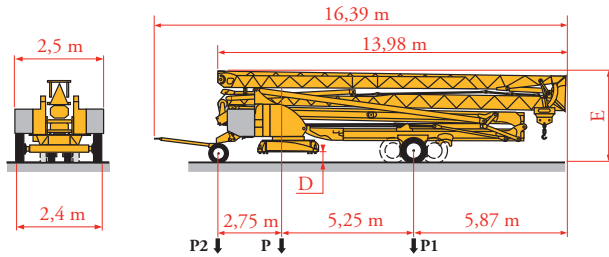
IT
 Sollevamento
 Dtribuzione
 Rotazione

PT
 Elevação
 Distribuição
 Rotação

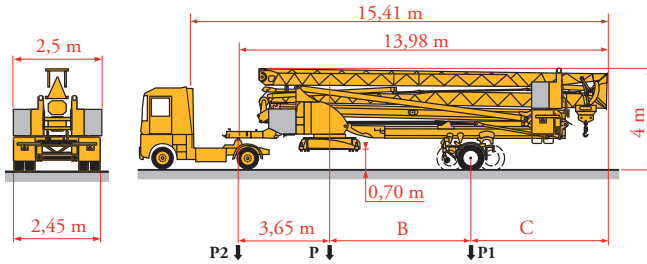
RU
 Подъем
 Перемещение каретки
 Поворот

Transport
 Transport
 Transport
 Transporte
 Trasporto
 Transporte
 Транспортировка

LXT 7



	Km/h	D (m)	E (m)	P (kg)	P1 (kg)	P2 (kg)
DJ100/S120	10	0,20/0,35	3,42/3,57	21655	11725	9930
DJ105/S125	25	0,20/0,35	3,42/3,57	21945	11945	10000
...	**					



	Km/h	B (m)	C (m)	P (kg)	P1 (kg)	P2 (kg)
SL121/J135	25	5,88	5,24	22495	13000	9495
SL122/J215M	80	4,93	6,19	23650	15400	8250
...	**					



FR

Transport grue
 toute lestée.



Voir documentations
 techniques.

DE

Krantransport mit voller
 Ballastierung.

Siehe technische
 Dokumentation.

EN

Transport of crane with
 full ballast.

See technical
 documentations.

ES

Transporte grúa
 completamente lastrada.

Consulte la
 documentación técnica.

IT

Trasporto con gru
 completamente
 zavorrata.
 Vedere la documen-
 tazione tecnica.

PT

Transporte de grua
 totalmente balastrada.

Consultar documen-
 tações técnicas.

RU

Перевозка крана с
 полным балластом

см. техническую
 документацию



Document commercial
 non contractuel. Pour
 toute information
 technique se référer à la
 notice correspondante.

Unverbindliches
 Vertriebsdokument. Für
 technische Informationen,
 siehe die entsprechenden
 Anweisungen.

This commercial document
 is not legally binding. For
 any technical information,
 please refer to the
 corresponding instructions.

Documento commercial
 no contractual. Para
 cualquier información
 técnica, ver la noticia
 correspondiente.

Documento commerciale
 non vincolante, per tutte
 le informazioni tecniche
 fare riferimento al
 catalogo istruzioni.

Documento comercial não
 contratual. Para qualquer
 informação técnica
 complementar consultar
 as respectivas instruções.

Этот коммерческий документ
 не является юридически
 обязательным. Для получения
 технической информации, см.
 соответствующие инструкции.

Manitowoc

Manitowoc - Americas - World Headquarters
 2400 S. 44th Street • Manitowoc • WI 54220 USA
 Tel: +1 920 684 4410 • Fax: +1 920 652 9778

Manitowoc - Europe, Middle East & Africa
 Ecully, France
 18, rue de Charbonnières B.P. 173 • 69132 ECULLY Cedex • FRANCE
 Tel: +33 (0)4 72 18 20 20 • Fax: +33 (0)4 72 18 20 00

Manitowoc - Asia Pacific
 16F Xu Hui Yuan Building,
 1089 Zhongshan No.2 Road (S) • Shanghai 200030 China
 Tel: +86 21 6457 0066 • Fax: +86 21 6457 4955