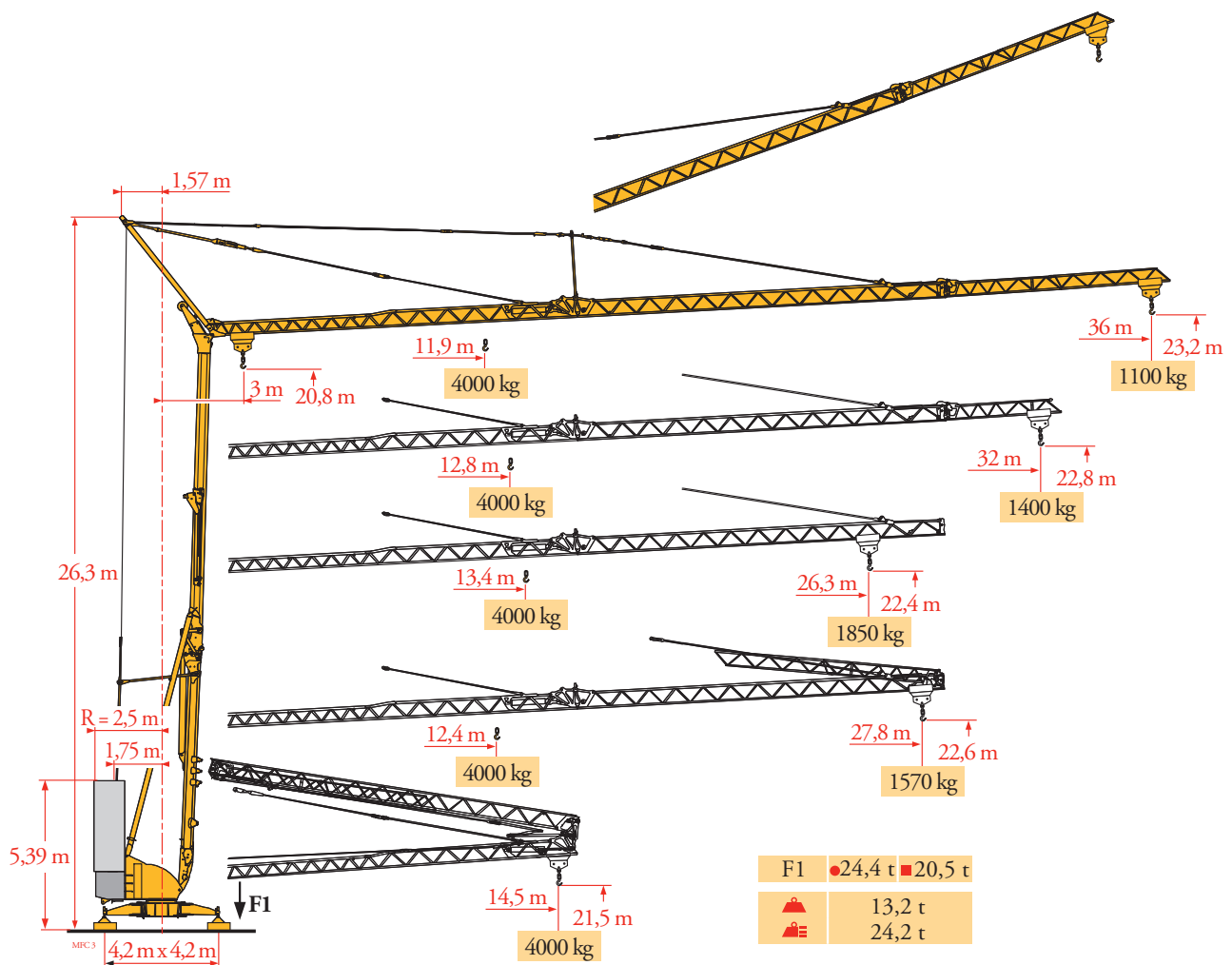


# Potain Igo 42



Courbes de charges  
Lastkurven  
Load diagrams  
Curvas de cargas  
Curve di carico  
Curva de cargas  
Диаграммы грузоподъемностей

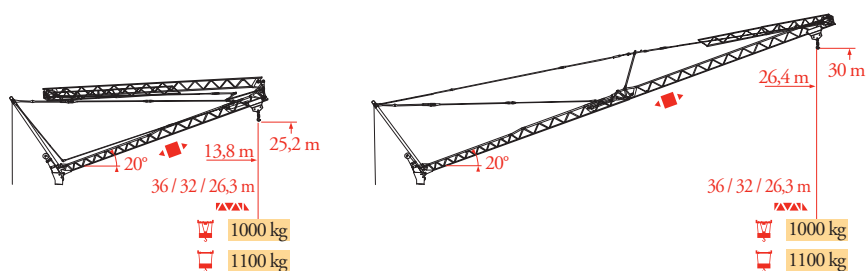
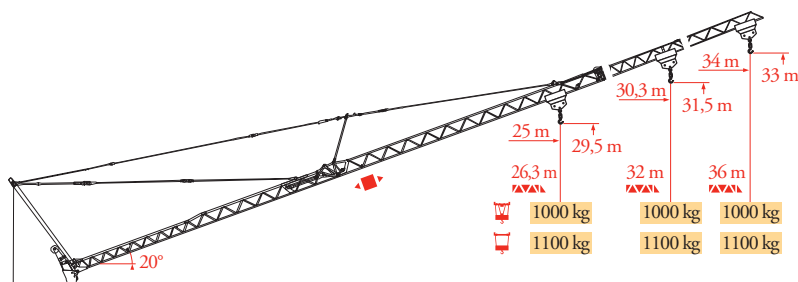
MFC3

36 m	3	11,9 12 14 16 18 20 20,8 21,8 22 24 26 28 30 32 34 36 m
		4000 3950 3255 2760 2385 2095 - - 1860 1670 1515 1380 1265 1165 1080 1000 kg
		2000 - 1860 1670 1515 1380 1265 1165 1080 1000 kg
32 m	3	12,8 14 16 18 20 22 22,6 23,6 24 26 28 30 32 m
		4000 3595 3050 2640 2320 2065 - - 1855 1685 1535 1410 1300 kg
		2000 - 1855 1685 1535 1410 1300 kg
26,3 m	3	13,4 14 16 18 20 22 23,6 24 24,6 26,3 m
		4000 3780 3210 2780 2445 2180 - 1930 - 1750 kg
		2000 1930 - 1750 kg

36 / 32 / 26,3 m	3	14,5 m	12,4 14 16 18 20 21,7 22 22,6 24 26 27,8 m
		4000 kg	4000 3425 2900 2510 2210 - 1965 - 1765 1600 1470 kg
		2000 kg	2000 1965 - 1765 1600 1470 kg
		2000 kg	2000 1865 1700 1570 kg

Flèche relevée  
Ausleger in Steilstellung  
Luffing jib  
Flecha izada  
Braccio impennato  
Lança inclinada  
Маховая стрела

MFC4



**FR**

Chariot distributeur  
Réactions en service  
Réactions hors service

A vide sans lest (ni train de transport) avec flèche et hauteur maximum.

Poids total du lest

**DE**

Verfahrbare Laufkatze  
Reaktionskräfte in Betrieb  
Reaktionskräfte außer Betrieb

Ohne Last, Ballast (und Transportachse), mit Maximalausleger und Maximalhöhe.

Ballast-Gesamtgewicht.

**EN**

Traversing trolley  
Reactions in service  
Reactions out of service

Without load, ballast (or transport axes), with maximum jib and maximum height.

Gross ballast weight.

**ES**

Carro distribuidor  
Reacciones en servicio  
Reacciones fuera de servicio

Sin carga, sin lastre, (ni tren de transporte), flecha y altura máxima.

Peso total del lastre.

**IT**

Carrellino distributore  
Reazioni in servizio  
Reazioni fuori servizio

A vuoto, senza zavorra (ne assali di trasporto) con braccio massimo e altezza massima.

Peso totale della zavorra.

**PT**

Carro distribuidor  
Reacções em serviço  
Reacções fora de serviço

Sem carga (nem trem de transporte)-sem lastro com lança e altura máximas.

Peso total do lastro.

**RU**

Грузовая тележка  
Реакции при работе  
Реакции в покое

Вес без груза, балласта (или транспортных осей), с максимальной длиной стрелы и максимальной высотой.  
общий вес груза

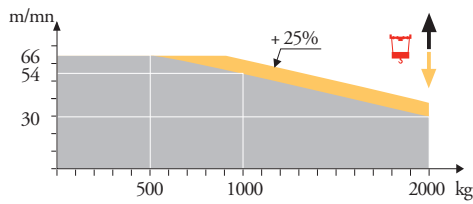
Mécanismes  
Antriebe  
Mechanisms  
Mecanismos  
Meccanismi  
Mecanismos  
Механизмы

MFC 3

			⚡					⚡					⚡					ch-PS hp	kW
⬆	15 LVF 10 Optima	m/min	3,6	18	30	49	66	3,6	18	30	54	66	1,8	8,9	15	27	33	15	11
		kg	2000	2000	2000	1100	500	2000	2000	2000	1000	500	4000	4000	4000	2000	1000		
➡	3 DVF 5	m/min	15 - 30 - 45 (0 → 1000 kg) - 15 - 30 - 41 (1000 → 4000 kg)														3	2,2	
⬆	RVF 41 Optima +	tr/min U/min - rpm	0 → 0,8														4	3	

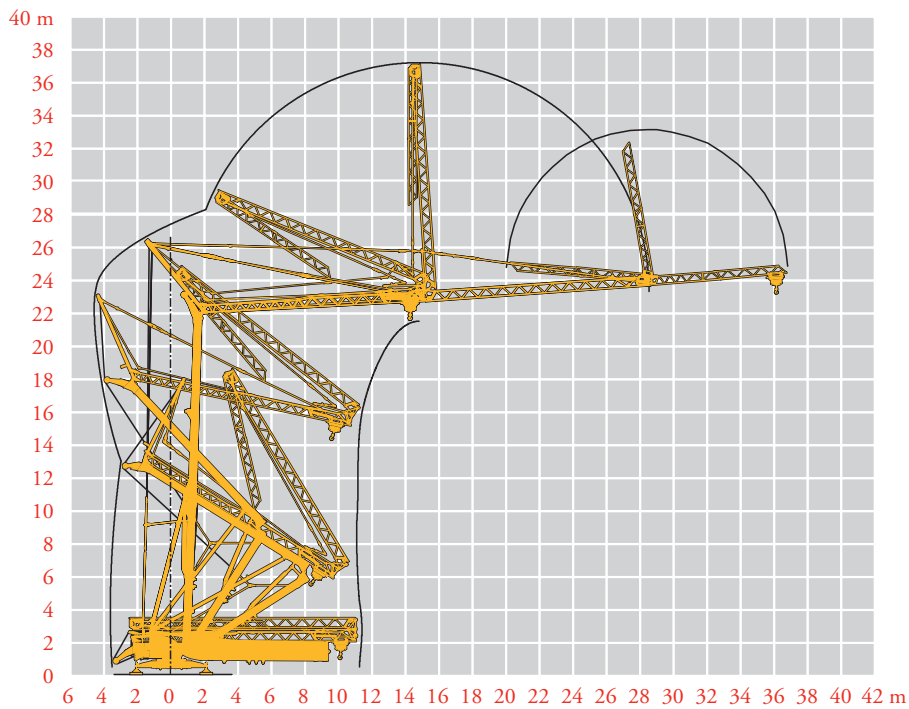
IEC 60204-32	kVA
400 V (+10% -10%) 50 Hz	15 LVF 10 : 22 kVA
480 V (+6% -10%) 60 Hz	15 LVF 10 : 22 kVA

15 LVF 10 Optima



Montage  
Montage  
Erection  
Montaje  
Montaggio  
Montagem  
Монтаж

MFC 3



**FR**  
⬆  
Levage  
➡  
Distribution  
⬆

**DE**  
Heben  
Katzfahren  
Schwenken

**EN**  
Hoisting  
Trolleying  
Slewing

**ES**  
Elevación  
Distribución  
Orientación

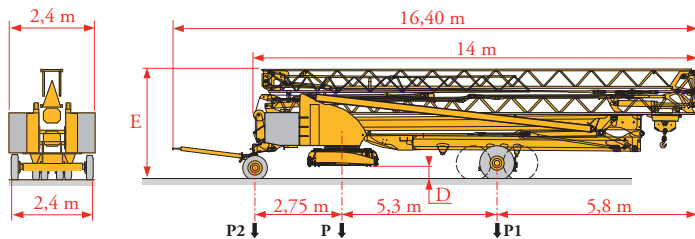
**IT**  
Sollevamento  
Distribuzione  
Rotazione

**PT**  
Elevação  
Distribuição  
Rotação

**RU**  
Подъем  
Перемещение каретки  
Поворот

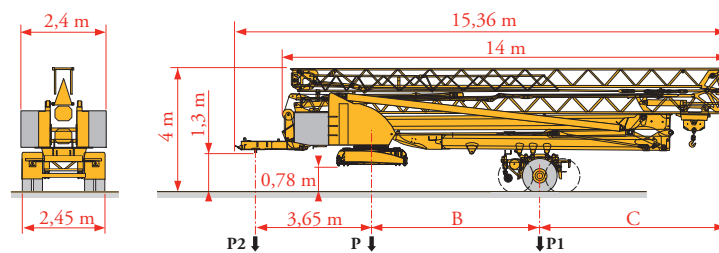
Transport  
Transport  
Transport  
Transporte  
Trasporto  
Transporte  
Транспортировка

MFC4



	Km/h	D (m)	E (m)	P (kg)	P1 (kg)	P2 (kg)
DJ100/S120	10	0,36/0,21	3,52/3,37	19280	10980	8300
DJ105/S125	25	0,36/0,21	3,52/3,37	19570	10650	8920

... \*\*



	Km/h	B (m)	C (m)	P (kg)	P1 (kg)	P2 (kg)
SL121/J135	25	5,10	6,00	20190	12730	7460
SL122/J215M	80	5,00	6,17	21260	13910	7350

... \*\*

**FR**

\*\*

Voir documentations techniques.

**DE**

Siehe technische Dokumentation.

**EN**

See technical documentations.

**ES**

Consulte la documentación técnica.

**IT**

Vedere la documentazione tecnica.

**PT**

Consultar documentações técnicas.

**RU**

см. техническую документацию



Document commercial non contractuel. Pour toute information technique se référer à la notice correspondante.

Unverbindliches Vertriebsdokument. Für technische Informationen, siehe die entsprechenden Anweisungen.

This commercial document is not legally binding. For any technical information, please refer to the corresponding instructions.

Documento commercial no contractual. Para cualquier información técnica, ver la noticia correspondiente.

Documento commerciale non vincolante. per tutte le informazioni tecniche fare riferimento al catalogo istruzioni.

Documento comercial não contractual. Para qualquer informação técnica complementar consultar as respectivas instruções.

Этот коммерческий документ не является юридически обязательным. Для получения технической информации, см. соответствующие инструкции.

# Manitowoc

**Manitowoc - Americas - World Headquarters**  
2400 S. 44th Street • Manitowoc • WI 54220 USA  
Tel: +1 920 684 4410 • Fax: +1 920 652 9778

**Manitowoc - Europe, Middle East & Africa**  
Ecully, France  
18, rue de Charbonnières B.P. 173 • 69132 ECULLY Cedex • FRANCE  
Tel: +33 (0)4 72 18 20 20 • Fax: +33 (0)4 72 18 20 00

**Manitowoc - Asia Pacific**  
16F Xu Hui Yuan Building,  
1089 Zhongshan No.2 Road (S) • Shanghai 200030 China  
Tel: +86 21 6457 0066 • Fax: +86 21 6457 4955

REF. 2008 03 MFC 4